

**Paper Reference(s) 1MU0/03**

**Pearson Edexcel Level 1/Level 2 GCSE (9–1)**

**Music**

**Component 3: Appraising**

**Tuesday 4 June 2019 – Afternoon**

## **SOURCE BOOKLET**

**DO NOT RETURN THIS  
SOURCE BOOKLET WITH THE  
QUESTION PAPER.**

### **INSTRUCTIONS TO CANDIDATES**

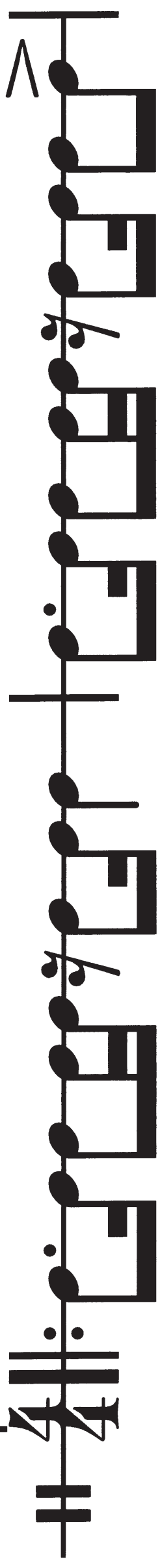
- **This booklet contains the scores in relation to Question 9 of the examination paper.**
- **Any notes made in this booklet will not be marked or credited.**

# **Familiar, Extract A: Afro Celt Sound System: Release (from the album 'Volume 2: Release')**

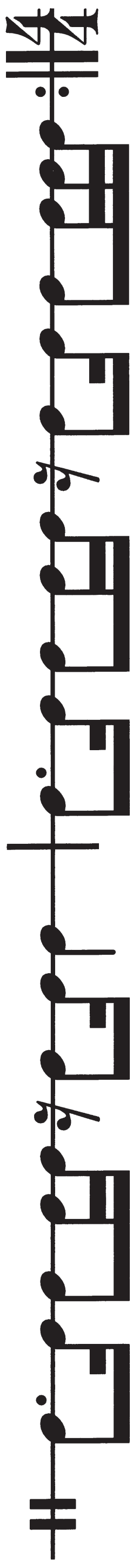
**This skeleton score shows loops which drop in and out of the mix and the two solos**

**(Continues on next page)**

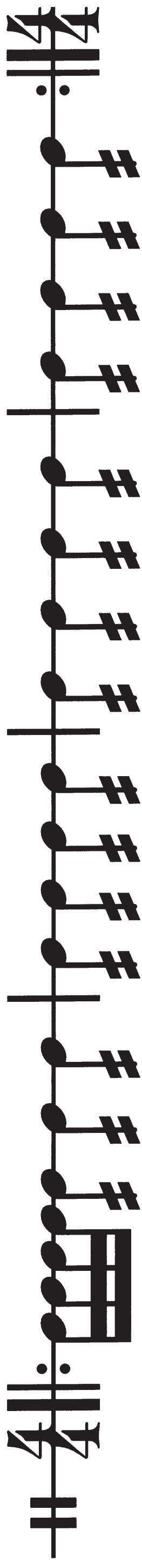
# Loop A



# Loop

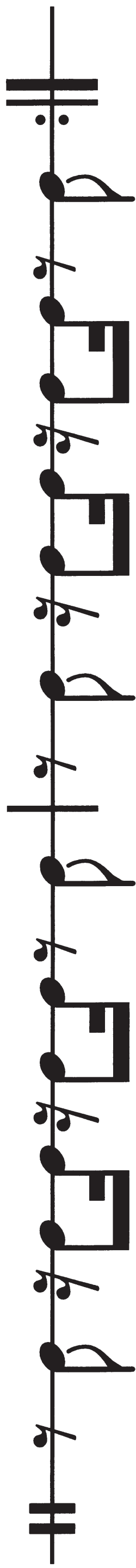


# Loop C

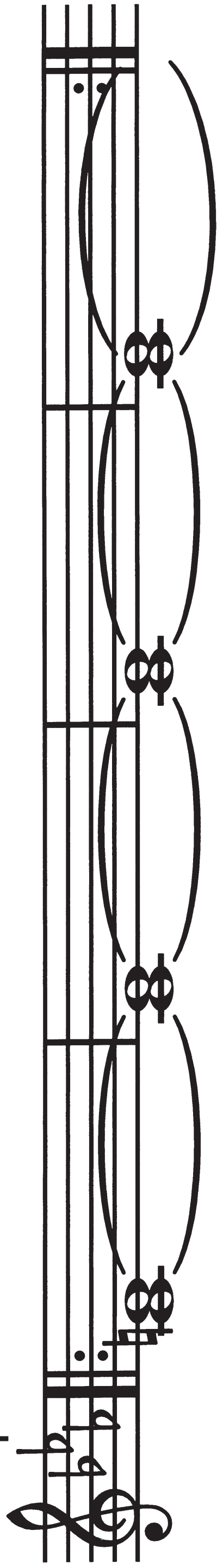


**(Continues on next page)**

**(Turn over)**

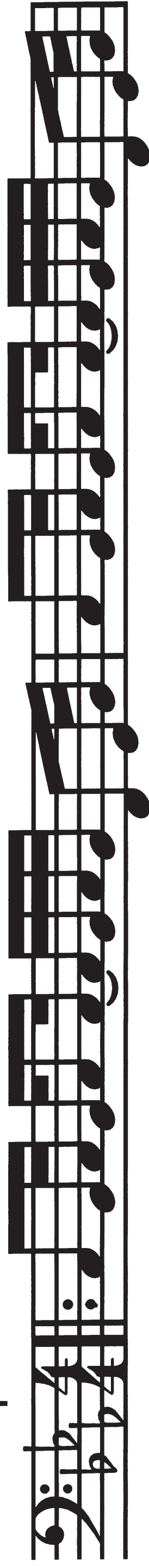


### Loop D



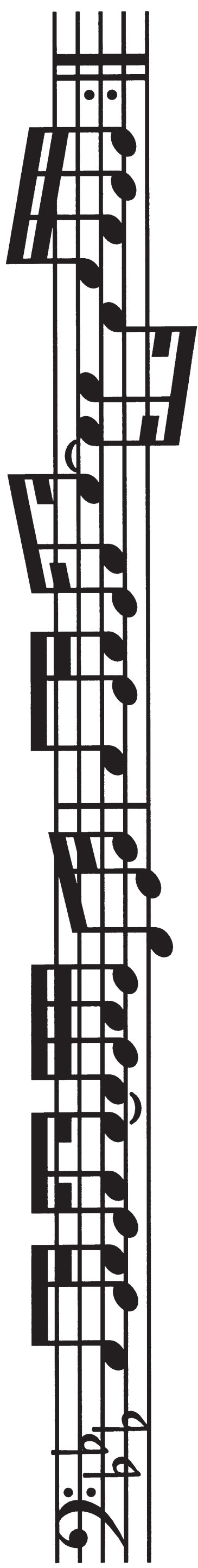
4

### Loop E



(Continues on next page)

(Turn over)



**(Continues on next page)**

# Loop F

The musical score for Loop F is written on a single staff with a treble clef, a key signature of two flats (B-flat and E-flat), and a 4/4 time signature. The melody begins with a quarter rest, followed by a half note G4, a quarter note A4, and a half note B4. This is followed by a quarter note C5, a quarter note D5, and a half note E5. The melody then repeats from the beginning. A first ending bracket is placed over the final two measures of the loop, which are marked with a '6' above the staff. The first ending consists of a quarter note G4, a quarter note A4, and a half note B4, followed by a quarter note C5, a quarter note D5, and a half note E5. The first ending is marked with a '6' above the staff.

(Continues on next page)

(Turn over)

# Loop

The image shows a musical score for the song "The Rose Tree". It is written for a single melodic line on a five-line staff. The key signature has two flats (B-flat and E-flat), and the time signature is 4/4. The melody consists of 16 measures, grouped into four measures per line. The notes are as follows:

- Measure 1: B-flat (half note), E-flat (half note)
- Measure 2: G (quarter note), A (quarter note), B-flat (quarter note), C (quarter note)
- Measure 3: D (quarter note), E-flat (quarter note), F (quarter note), G (quarter note)
- Measure 4: A (quarter note), B-flat (quarter note), C (quarter note), D (quarter note)
- Measure 5: E-flat (half note), F (half note)
- Measure 6: G (quarter note), A (quarter note), B-flat (quarter note), C (quarter note)
- Measure 7: D (quarter note), E-flat (quarter note), F (quarter note), G (quarter note)
- Measure 8: A (quarter note), B-flat (quarter note), C (quarter note), D (quarter note)
- Measure 9: E-flat (half note), F (half note)
- Measure 10: G (quarter note), A (quarter note), B-flat (quarter note), C (quarter note)
- Measure 11: D (quarter note), E-flat (quarter note), F (quarter note), G (quarter note)
- Measure 12: A (quarter note), B-flat (quarter note), C (quarter note), D (quarter note)
- Measure 13: E-flat (half note), F (half note)
- Measure 14: G (quarter note), A (quarter note), B-flat (quarter note), C (quarter note)
- Measure 15: D (quarter note), E-flat (quarter note), F (quarter note), G (quarter note)
- Measure 16: A (quarter note), B-flat (quarter note), C (quarter note), D (quarter note)

The lyrics "The Rose Tree" are written below the staff, aligned with the melody. The first line of lyrics is "The Rose Tree", and the second line is "The Rose Tree".

[illegible]

The image shows a musical score for the song "The Rose Tree". It is written for a vocal line and a piano accompaniment. The key signature has one flat (B-flat), and the time signature is 3/4. The score is divided into two systems, each marked with a large number "3" on the left. The vocal line is written on a single staff with a treble clef. The piano accompaniment is written on a grand staff (treble and bass clefs). The first system contains the first two lines of the song, and the second system contains the next two lines. The lyrics are written below the vocal line. The piano part includes chords and single notes, with some measures featuring a wavy line indicating a tremolo or a specific texture. The score ends with a double bar line.

**(Continues on next page)**

**(Turn over)**

Musical notation system 1, featuring a treble clef, key signature of two flats (B-flat and E-flat), and a 4/4 time signature. The system contains a single staff with a complex melodic line, including a series of eighth notes and a final measure with a whole note and a fermata.

Solo 1

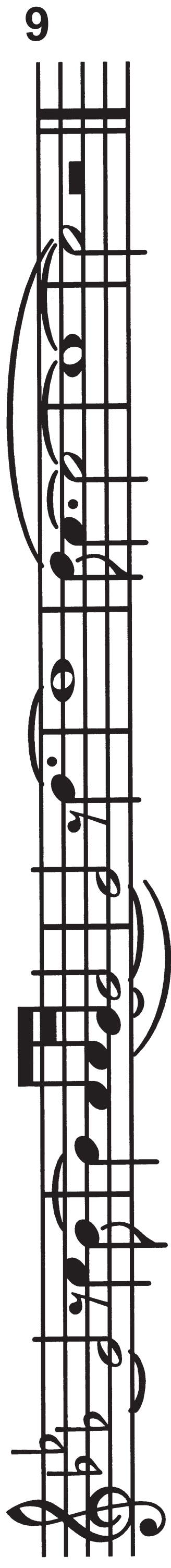
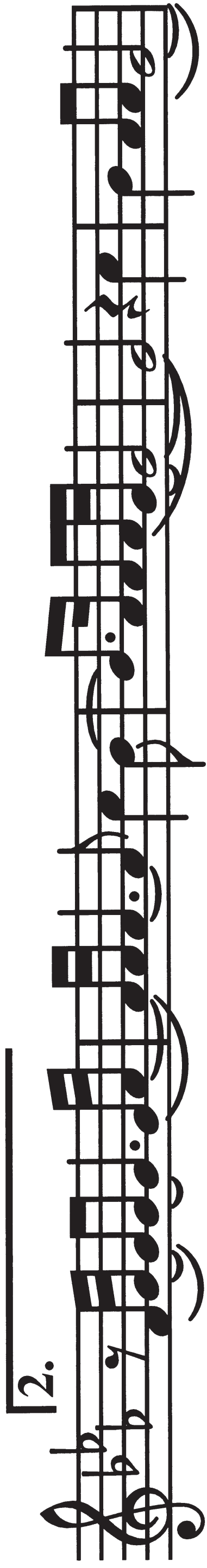
Musical notation system 2, featuring a treble clef, key signature of two flats (B-flat and E-flat), and a 4/4 time signature. The system contains a single staff with a complex melodic line, including a series of eighth notes and a final measure with a whole note and a fermata. The number 8 is written above the final measure.

Musical notation system 3, featuring a treble clef, key signature of two flats (B-flat and E-flat), and a 4/4 time signature. The system contains a single staff with a complex melodic line, including a series of eighth notes and a final measure with a whole note and a fermata. The first measure is marked with a first ending bracket and the number 1.

(Continues on next page)

(Turn over)

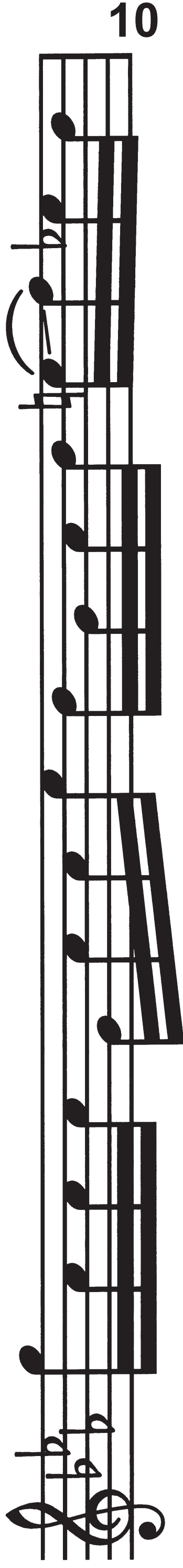




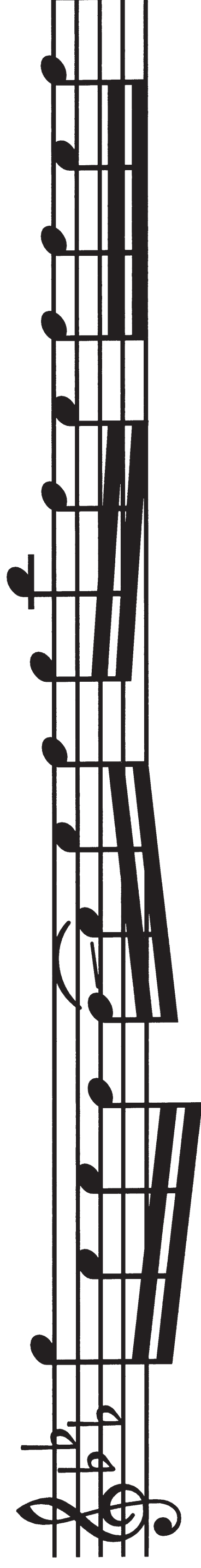
(Continues on next page)

(Turn over)

Solo 2

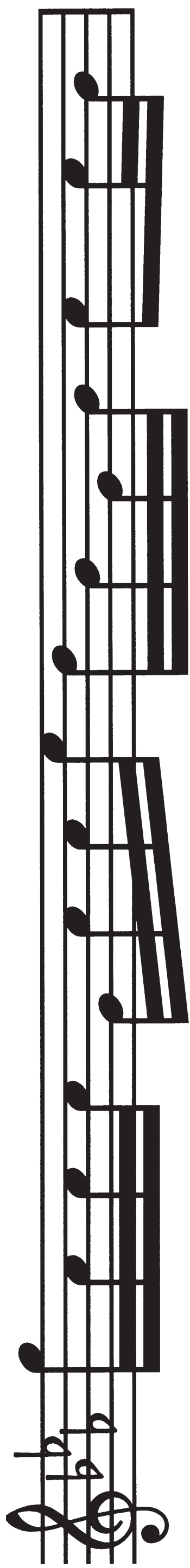


10

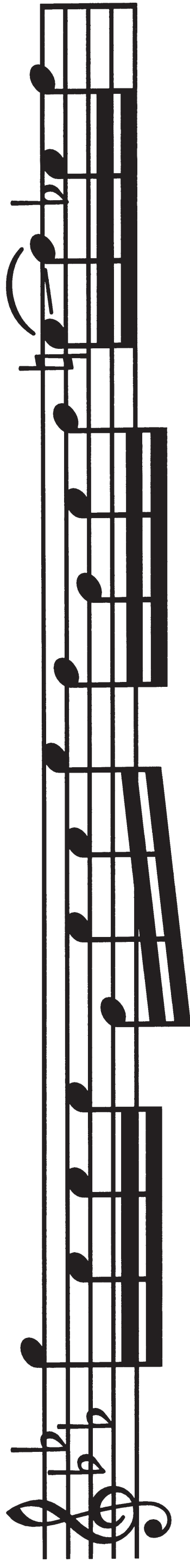
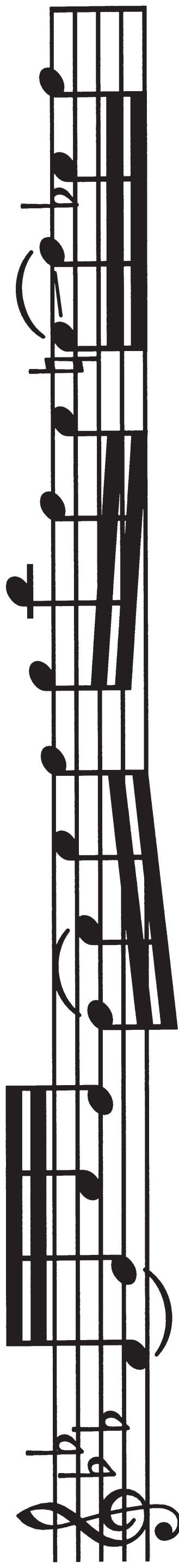


(Continues on next page)

(Turn over)

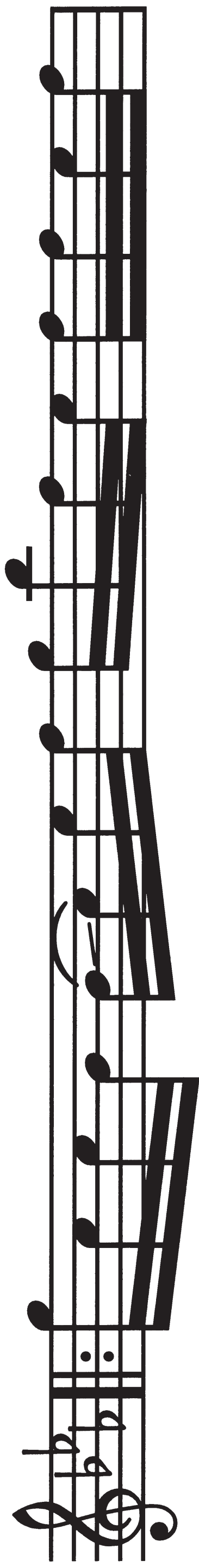


(+ 8va higher)



(Continues on next page)

(Turn over)

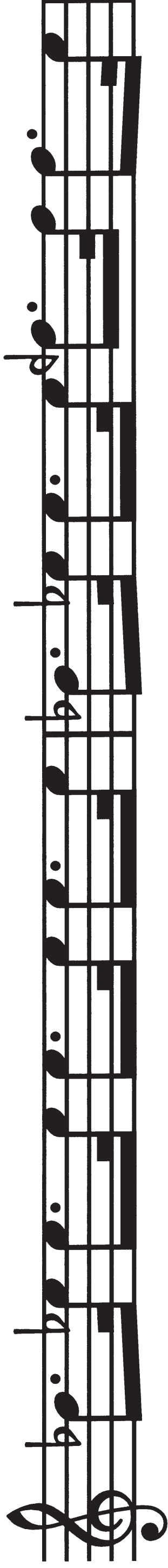


**Unfamiliar, Extract B: Panjabi MC: Mundian To Bach Ke (from the album ‘The Album’)**

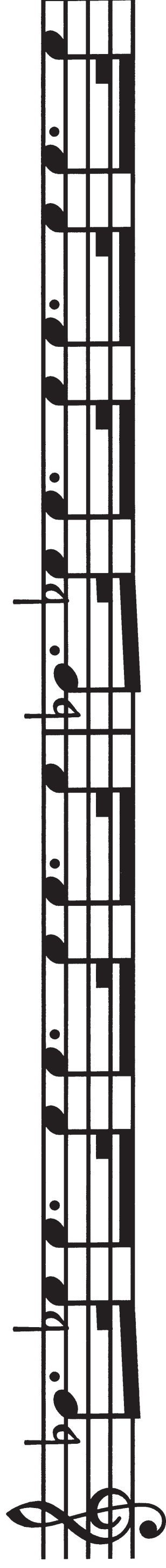
**This skeleton score shows loops which drop in and out of the mix and the two solos**

**(Continues on next page)**

Loop A

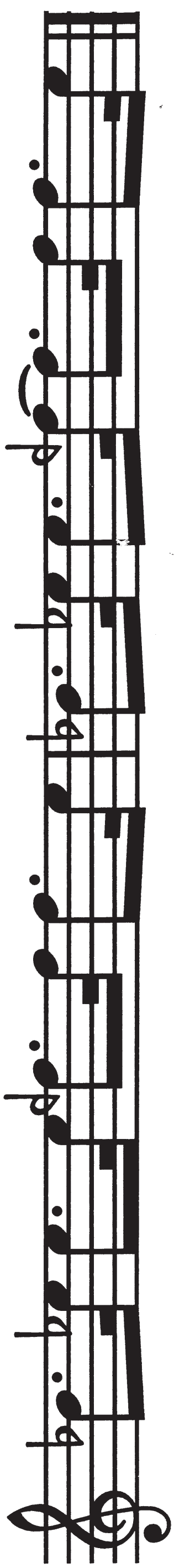


14



(Continues on next page)

(Turn over)



Loop B

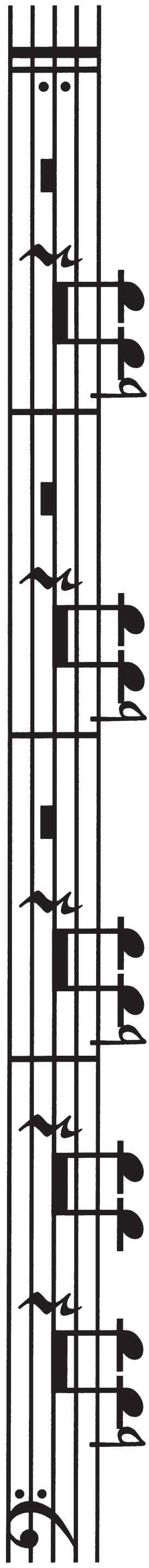


 = Loop C



(Continues on next page)

(Turn over)



Loop D

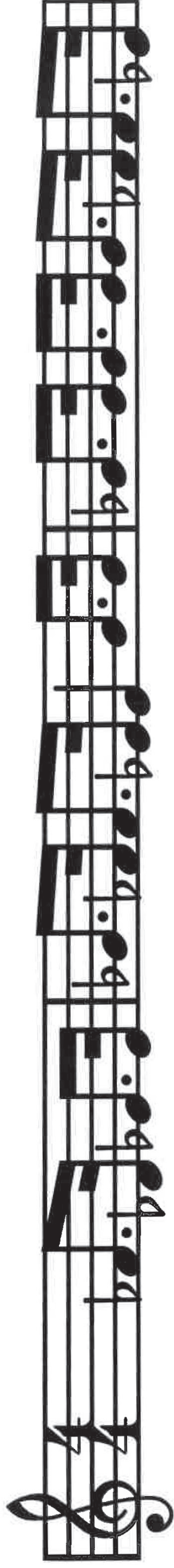


(Continues on next page)

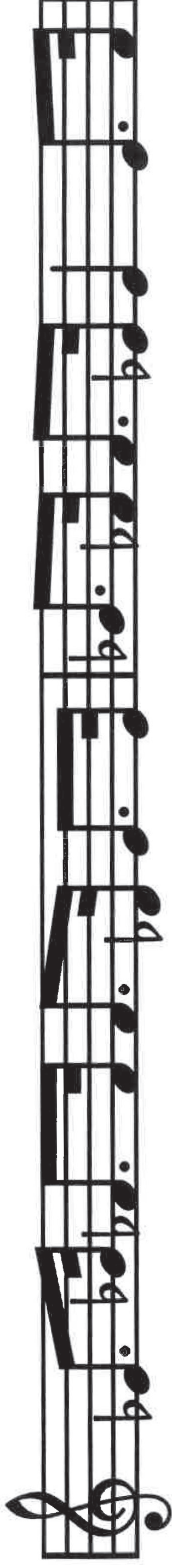
(Turn over)



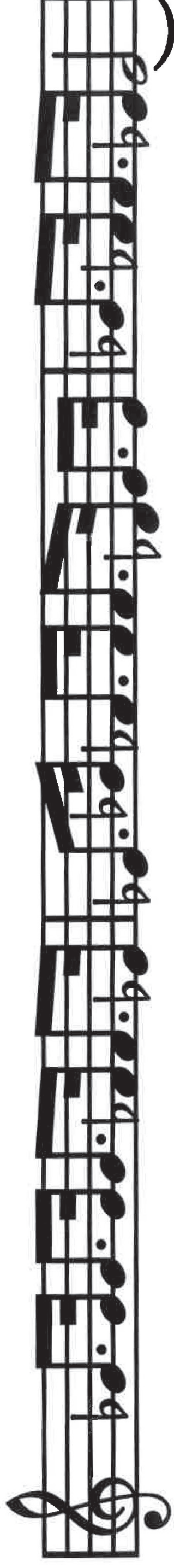
Solo1



2



2

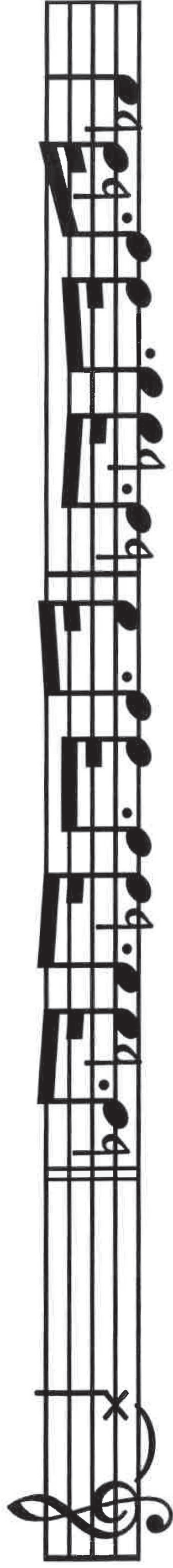


(Continues on next page)

(Turn over)

Solo 2

2



4



18

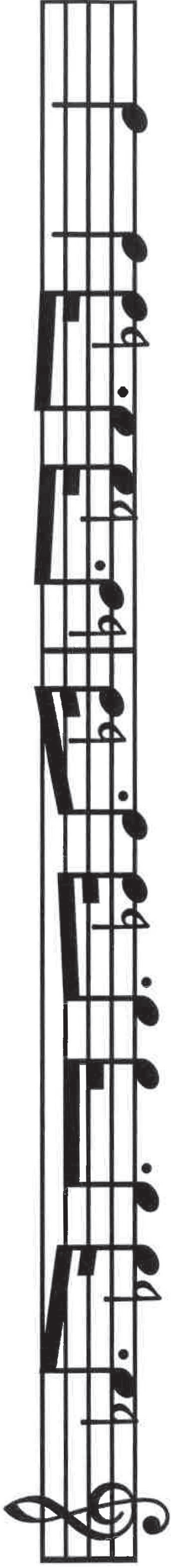
2



(Continues on next page)

(Turn over)





2



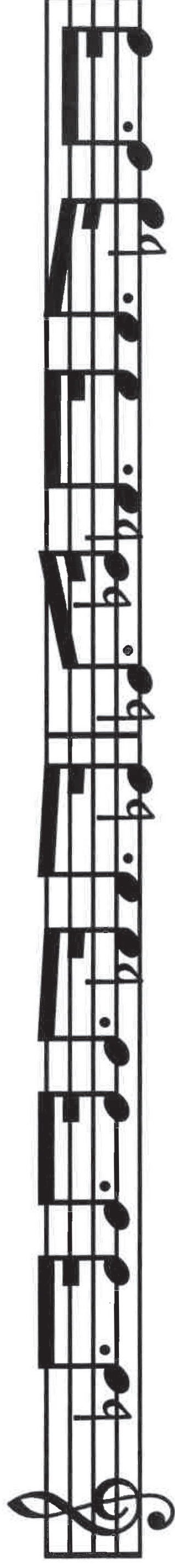
(Continues on next page)

(Turn over)





2



21



# END OF SOURCE BOOKLET